

INSTRUMENT KEY

- S4 19°, 575w @ 1
- S4 26°, 575w @ 4
- S4 36°, 575w @ 28
- S4 50°, 575w @ 55
- S4 PAR MFL, 575w @ 6
- S4 PAR WFL, 575w @ 18
- 6" FRESNEL, 750w @ 25
- PAR 64 VNSP, 1kW @ 2
- PAR 64 MFL, 1kW @ 6
- PAR 64 WFL, 1kW @ 10
- BIRDIE WFL, 75w @ 10
- L&E MINISTRIP, 750w @ 12
- LED TAPE, RGB+WARM WHITE
- VANITY LIGHTS

ACCESSORY KEY

- BARN DOOR
- 6.25" SHORT TOP HAT

TYPICAL

- ← TEMPLATE
- ← UNIT NUMBER
- ← CHANNEL

NOTES

- ALL UNITS ON 1'6" CENTERS UNLESS OTHERWISE NOTED
- LIGHTS OFF CENTER OF PIPE SHOULD BE YOKED 90° IN THAT DIRECTION
- YOKED UNITS ON TRUSSES SHOULD BE AS CLOSE AS POSSIBLE TO TRUSS
- BLUE PIPES INDICATE ADDED POSITIONS
- LEAVE CIRCUITS AVAILABLE OVER STAGE FOR ADDED LIGHTS
- PLEASE PROVIDE ADDITIONAL CUTS OF R114, R119, R132 AT FOCUS
- PLEASE PROVIDE BLACK TACK/WRAP AT FOCUS

THE DESIGNER IS RESPONSIBLE FOR THE VISUALS ASPECTS OF THE PRODUCTION ONLY, AND THE SPECIFICATIONS OF THE DESIGNER'S DESIGN RELATE SOLELY TO THE APPEARANCE OF THE DESIGN AND NOT TO THE MATTERS OF SAFETY. THE DESIGNER AGREES TO MAKE PROMPT CORRECTING ALTERATIONS TO ANY SPECIFICATIONS FOUND TO BE INCOMPATIBLE WITH PROPER SAFETY PRECAUTIONS.

DANCE NATION

BY: CLARE BARRON

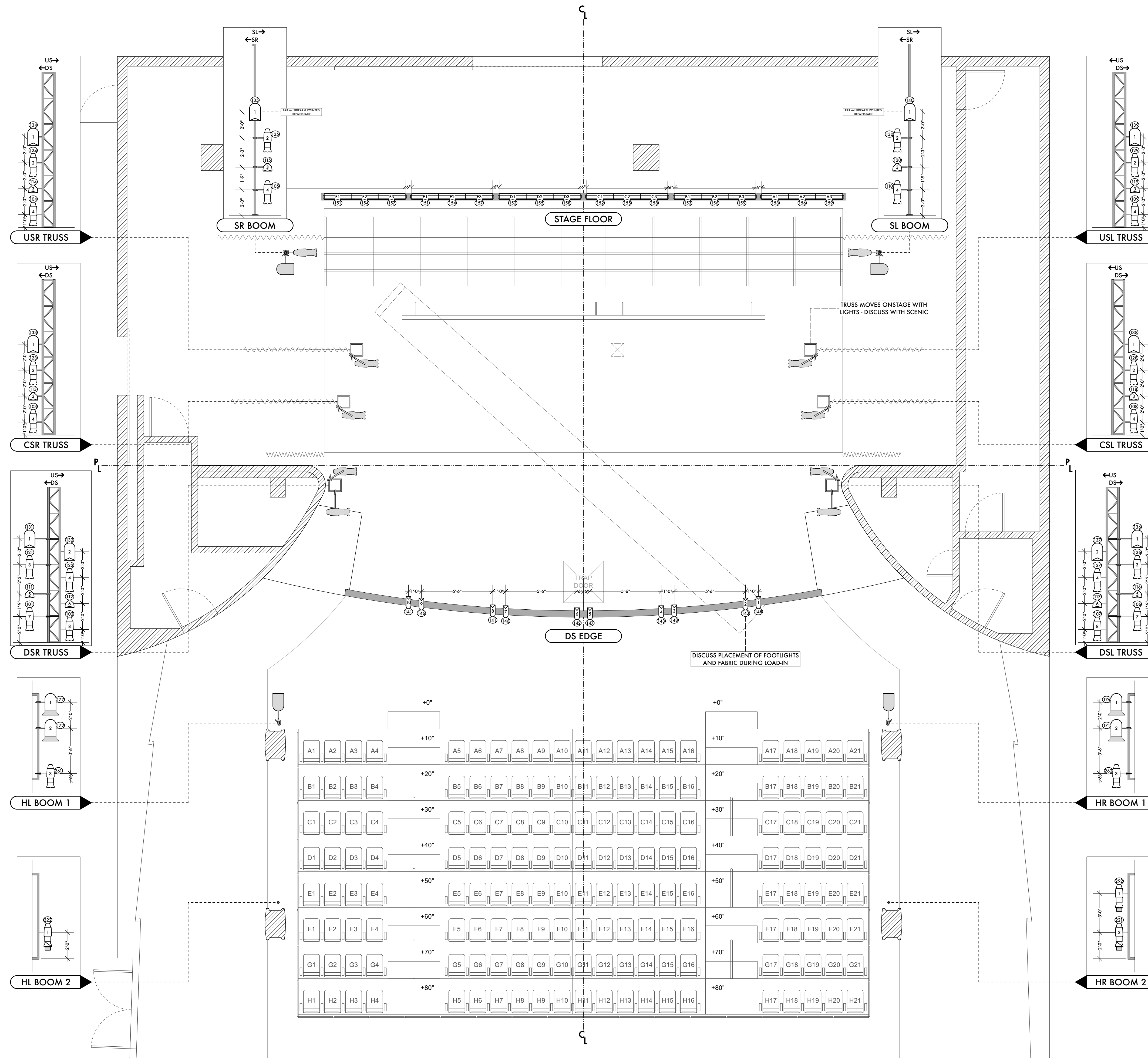
PRESENTED BY:
FORDHAM UNIVERSITY THEATRE PROGRAM
POPE AUDITORIUM

DIRECTED BY: SANAZ GHAJAR
SCENIC DESIGN BY: BRITTANY VASTA
COSTUME DESIGN BY: CHARLIE KO
SOUND DESIGN BY: ELLIOT YOKUM
LIGHTING DESIGN BY: WILL ROSSITER
ASST. LIGHTING DESIGN BY: LEE LILLIS

SUBMISSION	DATE	PLATE
PRELIM PLOT	09/05/2022	01 OF 4
INITIAL SUBMISSION	09/12/2022	
FIRST REVISION	09/16/2022	
DESIGNER RUN REVISION	09/23/2022	
FINAL PLOT	10/05/2022	

SCALE: 1/4" = 1'0" PAGE SIZE: 36"x24"

LIGHT PLOT OVERHEAD



INSTRUMENT KEY

- S4 19°, 575w @ 1
- S4 26°, 575w @ 4
- S4 36°, 575w @ 28
- S4 50°, 575w @ 55
- S4 PAR MFL, 575w @ 6
- S4 PAR WFL, 575w @ 18
- 6" FRESNEL, 750w @ 25
- PAR 64 VNSP, 1kW @ 2
- PAR 64 MFL, 1kW @ 6
- PAR 64 WFL, 1kW @ 10
- BIRDIE WFL, 75w @ 10
- L&E MINISTRIP, 750w @ 12
- LED TAPE, RGB+WARM WHITE
- VANITY LIGHTS

ACCESSORY KEY

- BARN DOOR
- 6.25" SHORT TOP HAT

TYPICAL

- ← TEMPLATE
- ← UNIT NUMBER
- ← CHANNEL

NOTES

- ALL UNITS ON 1"6" CENTERS UNLESS OTHERWISE NOTED
- LIGHTS OFF CENTER OF PIPE SHOULD BE YOKED 90° IN THAT DIRECTION
- YOKED UNITS ON TRUSSES SHOULD BE AS CLOSE AS POSSIBLE TO TRUSS
- BLUE PIPES INDICATE ADDED POSITIONS
- LEAVE CIRCUITS AVAILABLE OVER STAGE FOR ADDED LIGHTS
- PLEASE PROVIDE ADDITIONAL CUTS OF R114, R119, R132 AT FOCUS
- PLEASE PROVIDE BLACK TACK/WRAP AT FOCUS

THE DESIGNER IS RESPONSIBLE FOR THE VISUALS ASPECTS OF THE PRODUCTION ONLY, AND THE SPECIFICATIONS OF THE DESIGNER'S DESIGN RELATE SOLELY TO THE APPEARANCE OF THE DESIGN AND NOT TO THE MATTERS OF SAFETY. THE DESIGNER AGREES TO MAKE PROMPT CORRECTING ALTERATIONS TO ANY SPECIFICATIONS FOUND TO BE INCOMPATIBLE WITH PROPER SAFETY PRECAUTIONS.

DANCE NATION

BY: CLARE BARRON

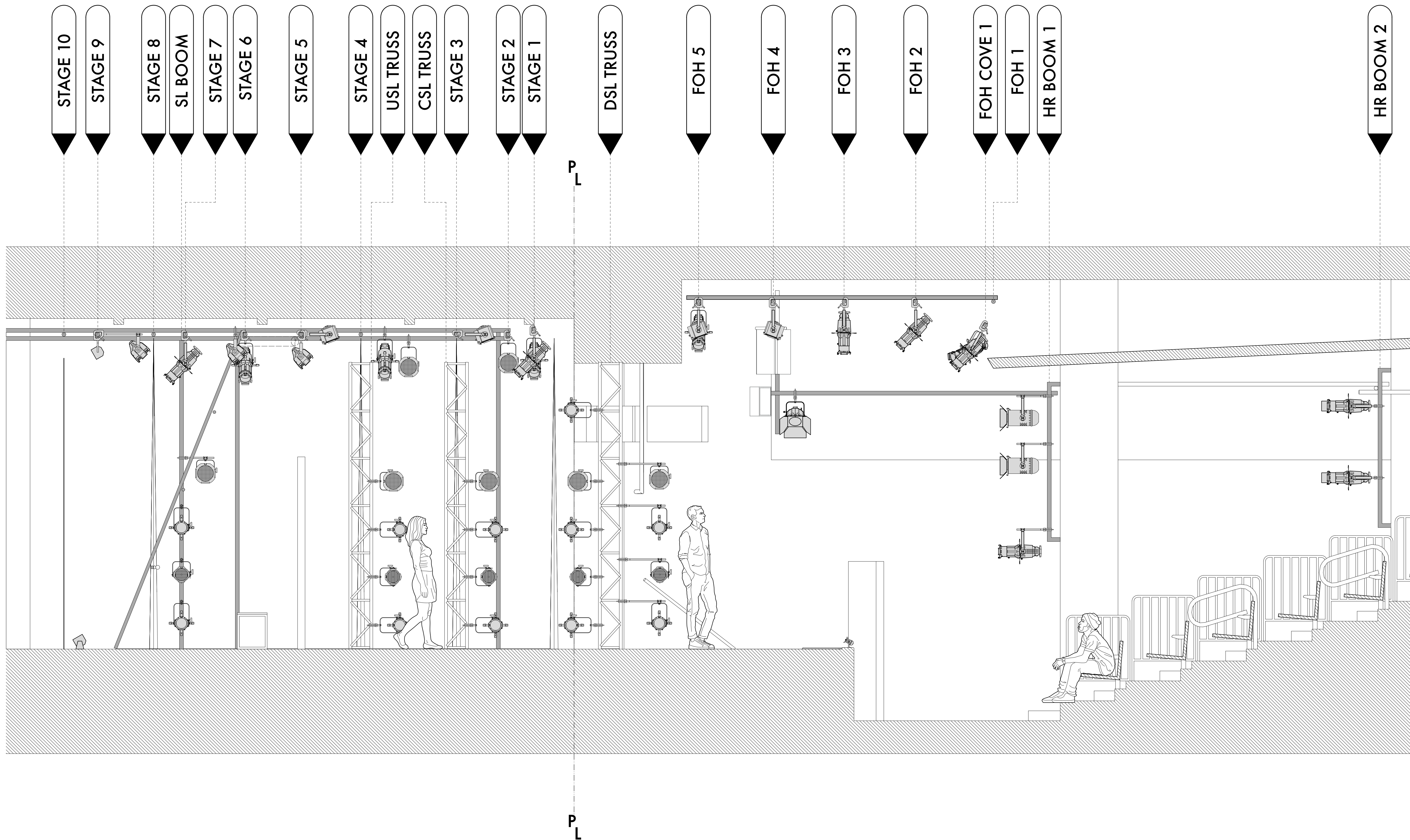
PRESENTED BY:
FORDHAM UNIVERSITY THEATRE PROGRAM
POPE AUDITORIUM

DIRECTED BY: SANAZ GHAJAR
SCENIC DESIGN BY: BRITTANY VASTA
COSTUME DESIGN BY: CHARLIE KO
SOUND DESIGN BY: ELLIOT YOKUM
LIGHTING DESIGN BY: WILL ROSSITER
ASST. LIGHTING DESIGN BY: LEE LILLIS

SUBMISSION	DATE	PLATE
PRELIM PLOT	09/05/2022	02 OF 4
INITIAL SUBMISSION	09/12/2022	
FIRST REVISION	09/16/2022	
DESIGNER RUN REVISION	09/23/2022	
FINAL PLOT	10/05/2022	

SCALE: 1/4" = 1'0" PAGE SIZE: 36"x24"

LIGHTING DECK PLOT



INSTRUMENT KEY

- S4 19°, 575w @ 1
- S4 26°, 575w @ 4
- S4 36°, 575w @ 28
- S4 50°, 575w @ 55
- S4 PAR MFL, 575w @ 6
- S4 PAR WFL, 575w @ 18
- 6" FRESNEL, 750w @ 25
- PAR 64 VNSP, 1kW @ 2
- PAR 64 MFL, 1kW @ 6
- PAR 64 WFL, 1kW @ 10
- BIRDIE WFL, 75w @ 10
- L&E MINISTRIP, 750w @ 12
- LED TAPE, RGB+WARM WHITE
- VANITY LIGHTS

ACCESSORY KEY

- BARN DOOR
- 6.25" SHORT TOP HAT

TYPICAL

- ← TEMPLATE
- ← UNIT NUMBER
- ← CHANNEL

NOTES

- ALL UNITS ON 1'6" CENTERS UNLESS OTHERWISE NOTED
- LIGHTS OFF CENTER OF PIPE SHOULD BE YOKED 90° IN THAT DIRECTION
- YOKED UNITS ON TRUSSES SHOULD BE AS CLOSE AS POSSIBLE TO TRUSS
- BLUE PIPES INDICATE ADDED POSITIONS
- LEAVE CIRCUITS AVAILABLE OVER STAGE FOR ADDED LIGHTS
- PLEASE PROVIDE ADDITIONAL CUTS OF R114, R119, R132 AT FOCUS
- PLEASE PROVIDE BLACK TACK/WRAP AT FOCUS

THE DESIGNER IS RESPONSIBLE FOR THE VISUALS ASPECTS OF THE PRODUCTION ONLY, AND THE SPECIFICATIONS OF THE DESIGNER'S DESIGN RELATE SOLELY TO THE APPEARANCE OF THE DESIGN AND NOT TO THE MATTERS OF SAFETY. THE DESIGNER AGREES TO MAKE PROMPT CORRECTING ALTERATIONS TO ANY SPECIFICATIONS FOUND TO BE INCOMPATIBLE WITH PROPER SAFETY PROCAUTIONS.

DANCE NATION

BY: CLARE BARRON

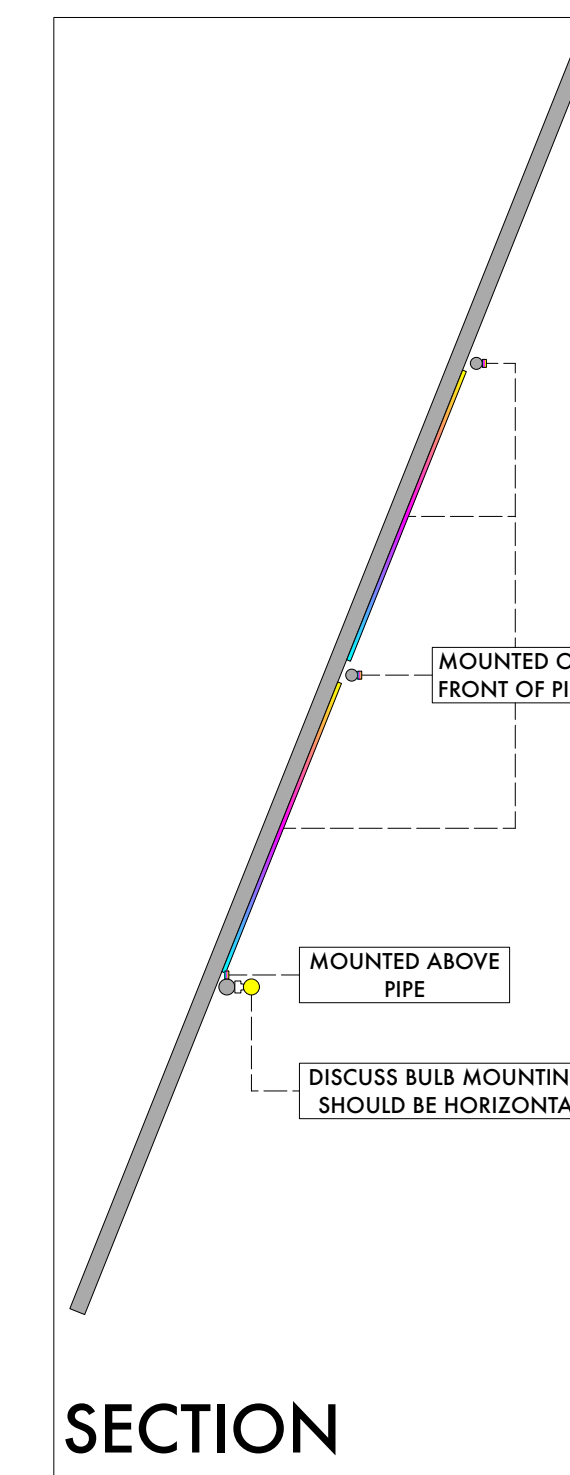
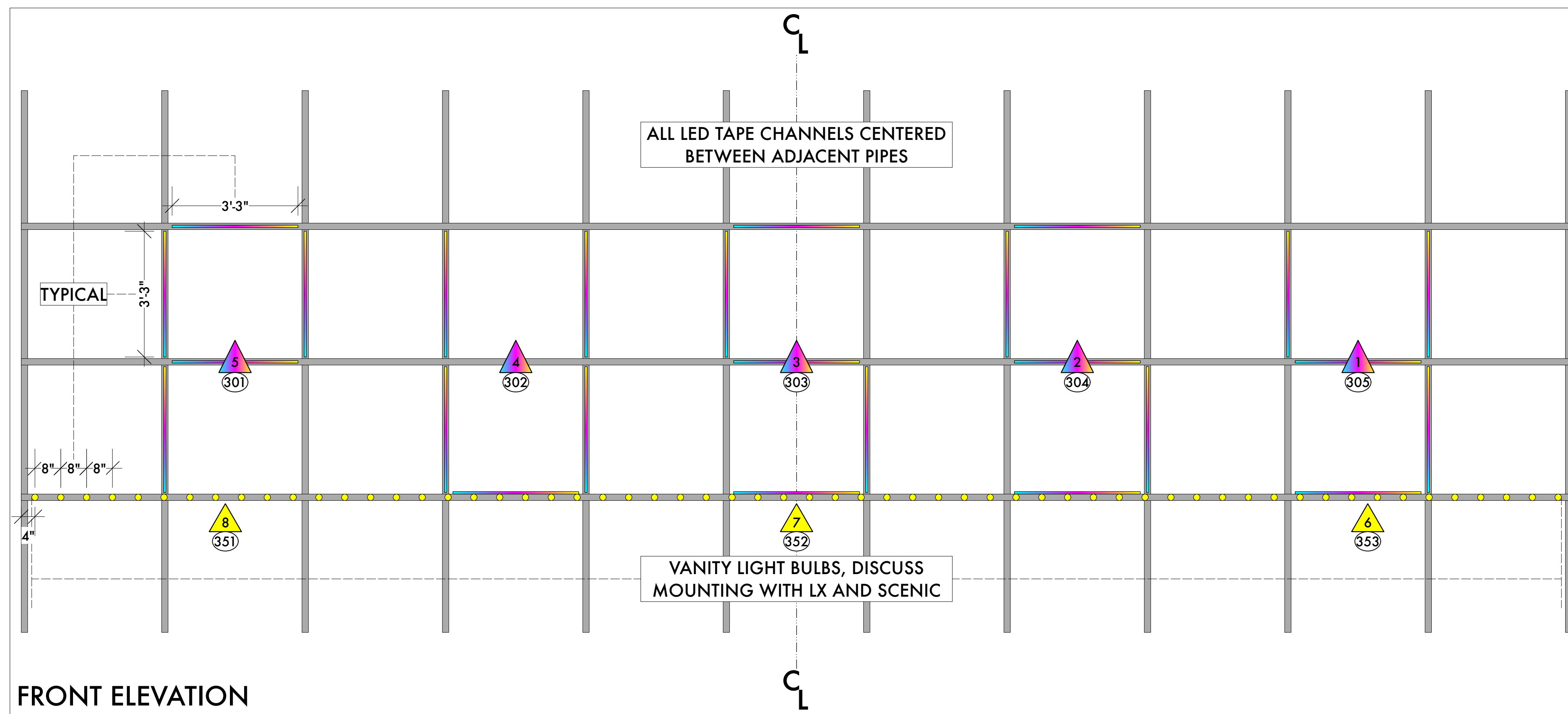
PRESENTED BY:
FORDHAM UNIVERSITY THEATRE PROGRAM
POPE AUDITORIUM

DIRECTED BY: SANAZ GHAJAR
SCENIC DESIGN BY: BRITTANY VASTA
COSTUME DESIGN BY: CHARLIE KO
SOUND DESIGN BY: ELLIOT YOKUM
LIGHTING DESIGN BY: WILL ROSSITER
ASST. LIGHTING DESIGN BY: LEE LILLIS

SUBMISSION	DATE	PLATE
PRELIM PLOT	09/05/2022	03 OF 4
INITIAL SUBMISSION	09/12/2022	
FIRST REVISION	09/16/2022	
DESIGNER RUN REVISION	09/23/2022	
FINAL PLOT	10/05/2022	

SCALE: 1/2" = 1'0" PAGE SIZE: 36"x24"

LIGHTING SECTION



INSTRUMENT KEY	
	S4 19°, 575w @ 1
	S4 26°, 575w @ 4
	S4 36°, 575w @ 28
	S4 50°, 575w @ 55
	S4 PAR MFL, 575w @ 6
	S4 PAR WFL, 575w @ 18
	6" FRESNEL, 750w @ 25
	PAR 64 VNSP, 1kW @ 2
	PAR 64 MFL, 1kW @ 6
	PAR 64 WFL, 1kW @ 10
	BIRDIE WFL, 75w @ 10
	L&E MINISTRIP, 750w @ 12
	LED TAPE, RGB+WARM WHITE
	VANITY LIGHTS

ACCESSORY KEY	
	BARN DOOR
	6.25" SHORT TOP HAT

TYPICAL	
	← TEMPLATE
	← UNIT NUMBER
	← CHANNEL

NOTES	
- ALL UNITS ON 1'6" CENTERS UNLESS OTHERWISE NOTED	
- LIGHTS OFF CENTER OF PIPE SHOULD BE YOKED 90° IN THAT DIRECTION	
- YOKED UNITS ON TRUSSES SHOULD BE AS CLOSE AS POSSIBLE TO TRUSS	
- BLUE PIPES INDICATE ADDED POSITIONS	
- LEAVE CIRCUITS AVAILABLE OVER STAGE FOR ADDED LIGHTS	
- PLEASE PROVIDE ADDITIONAL CUTS OF R114, R119, R132 AT FOCUS	
- PLEASE PROVIDE BLACK TACK/WRAP AT FOCUS	

THE DESIGNER IS RESPONSIBLE FOR THE VISUALS ASPECTS OF THE PRODUCTION ONLY, AND THE SPECIFICATIONS OF THE DESIGNER'S DESIGN RELATE SOLELY TO THE APPEARANCE OF THE DESIGN AND NOT TO THE MATTERS OF SAFETY. THE DESIGNER AGREES TO MAKE PROMPT CORRECTING ALTERATIONS TO ANY SPECIFICATIONS FOUND TO BE INCOMPATIBLE WITH PROPER SAFETY PROCAUTIONS.

DANCE NATION
 BY: CLARE BARRON
 PRESENTED BY:
 FORDHAM UNIVERSITY THEATRE PROGRAM
 POPE AUDITORIUM

DIRECTED BY: SANAZ GHAJAR
 SCENIC DESIGN BY: BRITTANY VASTA
 COSTUME DESIGN BY: CHARLIE KO
 SOUND DESIGN BY: ELLIOT YOKUM
 LIGHTING DESIGN BY: WILL ROSSITER
 ASST. LIGHTING DESIGN BY: LEE LILLIS

SUBMISSION	DATE	PLATE
PRELIM PLOT	09/05/2022	04 OF 4
INITIAL SUBMISSION	09/12/2022	
FIRST REVISION	09/16/2022	
DESIGNER RUN REVISION	09/23/2022	
FINAL PLOT	10/05/2022	

SCALE: 1/2" = 1'-0" PAGE SIZE: 36"x24"

LIGHTING SET MOUNT

1m BLACK ALUMINUM WIDE CHANNEL WITH SMOKY COVER

<https://www.amazon.com/Muzata-Transparent-Diffuser-Aluminum-Extrusion/dp/B07VPNM8DZ/>

CHANNEL REFERENCE

RGB COB LED TAPE

<https://www.superlightingled.com/1224v-cob-light-rgb-led-strip-color-changing-576ledsm-p-5176.html>

TAPE REFERENCE

FROSTED WARM WHITE GLOBE BULBS

<https://www.amazon.com/G40-Replacement-Shatterproof-Candelabra-Dimmable/dp/B09NW2J65Y/>

BULB REFERENCE